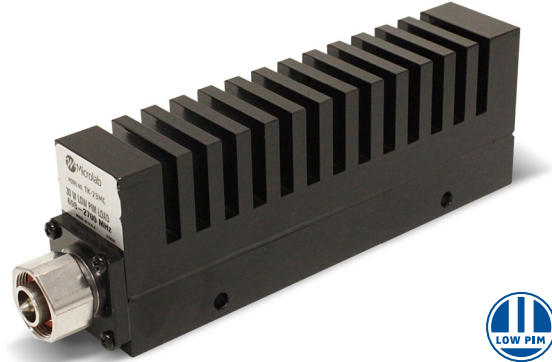


- ◆ Very Low Guaranteed PIM
- ◆ 30W average power
- ◆ Low VSWR
- ◆ Convenient Size
- ◆ Intimate cable contact
- ◆ RoHS compliant
- ◆ Multiple Connector Options
N, 7-16, 4.1-9.5 & 4.3-10



Model Numbers	Female	Male
Connector		
7-16	TK-23FD	TK-23MD
N-Type	TK-23FN	TK-23MN
4.1-9.5[†]	TK-23FC	TK-23MC
4.3-10	TK-23FE	TK-23ME

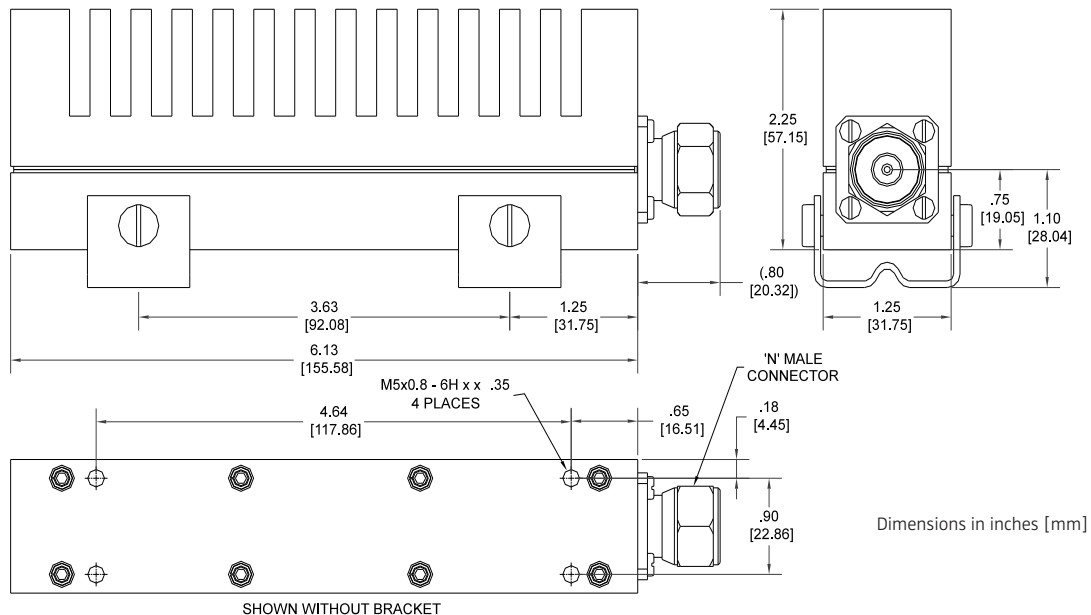
[†]Mini-DIN Connector

Microlab TK-23 Cable Loads are intended for wireless applications, when extremely low PIM, Passive Intermodulation, is required. A typical application is in terminating the unused port of a Hybrid Coupler used to combine different wireless signals.

For higher power, see Microlab models TK-27 Low PIM Loads.

Frequency:	400 - 2700 MHz
Power Rating:	30W avg. 5 kW peak Derate -1.2%/°C above 55°C ambient
VSWR:	<1.20:1 min., 1.10:1 typ.
PIM:	-161 dBc, with 2x 1900 MHz 20W test tones @ 25°C ambient
Environment:	-35 to +55°C ambient
Surface Temp:	+75°C max. per IEC 60950
Impedance:	50Ω nom.
Housing Finish:	Black epoxy paint, 2 brackets supplied
Connector Finish:	Triplate
Weight, nom:	1.45 lb., 660 g

Shown for TK-23MN



Note: Specifications are subject to change without prior notification.

21MAR2016